

TRAXER **PTW**

RAIL SCALES FOR DYNAMIC WEIGHING OF PTW WAGONS

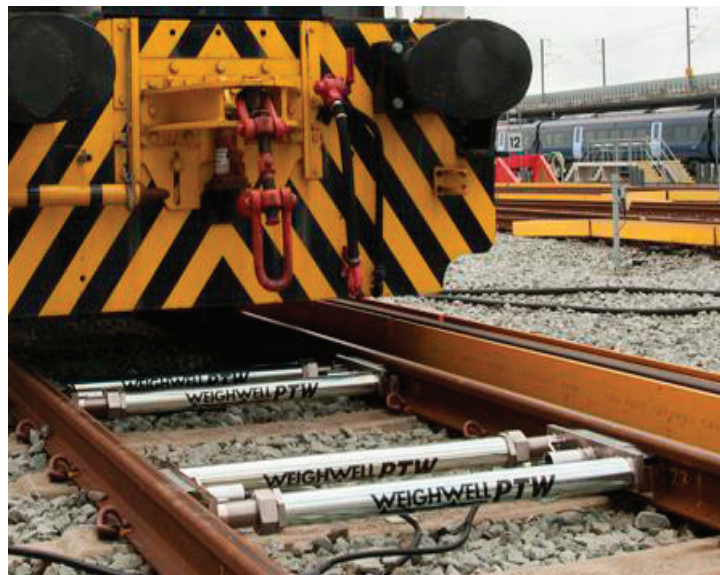


The Weighwell PTW1 system is a portable solution for weighing trains. Its ability to weigh individual wheels, axles, wagons and entire trains "on the move" enables quick installation on the rails by two people within 15 minutes. This system was introduced to the market in 1997 and has undergone extensive testing to verify the benefits of a portable weighing system over static systems.

PTW1 can identify improperly loaded wagons and provide information on the total weight of the train. The ability to recognize the weight of axles, wagons and the overall train can increase productivity, reduce downtime costs and improve cost efficiency. It is an ideal solution for achieving precise and serious results in rail freight transport, especially when transporting stone, coal, steel and the like.

So whether your priority is precise load control to prevent overloads that can damage wagons and infrastructure, or you want to prevent derailments due to eccentric loads – the PTW1 system provides an effective solution for both situations.

- **Fast weighing of wagons**
- Fully automatic weighing on the move
- **Quick installation of the system - 15 min**
- Without construction modifications
- **Can be used on any type of rails**
- The steel structure is also suitable for bad weather conditions
- **Checking the weight distribution on individual axles**
- Possibility of weighing both solid and liquid materials
- **Maintenance-free operation**
- Portable terminal for collecting data about wagons
- **Weighing results can be exported to USB in various formats, e.g. Excel or print directly from the terminal**
- Backlit graphic display
- **Control using the touch screen or QWERTY keyboard**
- Multilingual software
- **Possible conversion to:**
 - a. weighing 2/3 axle chassis
 - b. heavy version max=40 t / axle



LENGTH	600mm
NUMBER OF LOAD-BEARING BLOCKS	2pc
THE WEIGHT OF EACH BLOCK	41kg
WEIGHING PART	50kg
MAX WEIGHT WHEEL/AXLE	15 t / 30 t
INSTALLATION TIME	15 minutes
WEIGHING MODE	Dynamic
POWER / COVER	12VDC / IP67
ACCURACY	+/- 1 % depending on the conditions
OPERATING TEMPERATURE	-30 to +70 ° C
WEIGHING SPEED	5 km/h